



Asba Meats Ltd

CATALOGUE





Contents

5-9	About Us
10-12	Fresh Beef Products
13	Frozen Beef Products
14-15	Fresh Lamb Products
16	Frozen Lamb/ Sheep/ Goat
17-18	Fresh Poultry Products
19-21	Frozen Poultry Products
22-23	Block Fish Products
24-26	Whole Fish Products
27	Frozen Vegetables
28-30	Frozen Food products



**From Ireland
ToTheWorld**



About Us.

Asba is a leading Quality Halal meats, seafoods and food product supplier based in Shannon, Co.Clare, Republic of Ireland since 2011. Here at Asba Meats and Asba Foods we specialise in the production, processing and supply of stunned free Halal meat products and seafood to both traditional and mainstream retail, wholesale, catering and fast food markets both locally and internationally.

With a strong focus on service and a commitment to providing only the highest quality meat products, Asba Meats is steeped in both the rural way of life and meat processing excellence.





Market

We have the capacity to process large quantities of high quality produce, and not just in Ireland. We also export to several countries across Europe, including the UK, France, Italy, Germany, Scandinavia and beyond and are proud to provide quality Halal, Irish bred livestock and Processed meat and seafood, to consumers worldwide. Our export market is expanding daily and we work hard to always supply 100% Halal meats and food products to the international market while still maintaining our core values of quality service and customer satisfaction.



Quality

Our facilities are fully E.C approved and operate under the Department of Agriculture, Food and Marine guidelines. We have achieved the very highest standard of food hygiene and we monitor and maintain all hygiene records and procedures to ensure all our products are of the highest level of quality and freshness. Our seafood is imported directly from Asian Countries. Our products are stored at -18°C to ensure you get the best quality products from us. We have full traceability of every product we sell and produce we sell and produce to guarantee full confidence to all our customers in food safety and the highest hygiene legislation.

Services

“Our customers keep us going”.

Asba Meats is fully dedicated to excellent customer service and satisfaction, as we are well aware that it is to our customer's we owe our very sincere thanks to you, without our customers, Asba Meats and Foods would not exist or be as successful as it is today. if you have any issues regarding orders, any questions about delivery, pricing or Products, then don't hesitate to get in touch. For any Queries, questions or suggestions, please contact for more details.





Our Values

Our values are more than just words on a page- they are incorporated into every aspect of our business. They represent what we stand for, and symbolize how we can all work together to achieve our goal of being the best in all we do, and, in what we do:

“Providing consistent quality Halal Meat, Seafood and Food products from sustainable sources”

1. Continuous process innovation and investment to earlier safe and consistent quality products to meet and exceed consumer expectations.
2. To be our new and existing customer's key partner of choice through sustainable long term relationships
3. Challenging and supporting our people to realise their full potential as part of a high performance team in a safe working environment
4. Adding value with our farmer suppliers through proactive communication and innovative agricultural programmes.
5. Continuous adoption of innovative technology to enhance and deliver sustainability. Environmental Aims

1. Seek to reduce consumption of materials in our operation. At Asba Meats we will reuse rather than dispose wherever possible and promote recycling and the use of recycled materials.
2. Design energy efficient infrastructure in new buildings and equipment and work hard to manage energy wisely in all operations.
3. Provide necessary training and support to all our staff so that they can carry out their responsibilities effectively and professionally.
4. Work with external groups and organisations to promote the concept and practices of environmental protection.
5. Create partnership with our suppliers and customers in the adoption of environmentally sound practices



FRESH BEEF PRODUCTS





Beef Carcass
(Beef whole)



Beef Quarter
Shoulder



Beef Leg Hind
Quarter



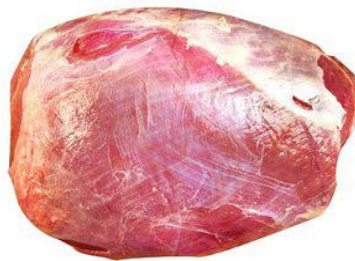
Beef Ribs



Beef Topside



Beef topside cushion



Beef Knuckle



Beef Silverside Pad



Beef Silverside



Beef Eye round



Beef Rump



Beef Shin



Beef Flank Steak



Beef Fillet Steak



Beef Striploin



Beef Striploin Pad



Beef Oxtail



Beef Liver



Beef Heart



Beef Tongue

FROZEN BEEF PRODUCTS



Beef Snoutmask
15 Pack x 1 kg



Beef Ponmo
15 Pack X 1 Kg



Beef Tripe/ Shaki
15 Pack X 1 kg



Beef Reed Tripe
15 Pack X 1 Kg



Beef Honeycomb
15 Pack X 1 kg



Beef Feet Cut
15 Pack X 1 Kg

Beef Oxtail
10 Pack X 1 Kg

Beef Shin
20 Pack X 1 Kg

Beef with Bone
15 Pack X 1 Kg

FRESH LAMB PRODUCTS





Lamb Carcass



Lamb Double Legs



Lamb F/Q Shoulder



Lamb Leg



Lamb F/Q Shank



Lamb Kidney



Lamb Liver



Lamb Front Chops



Lamb Back Chops



Lamb Neck Chops



Lamb / Mutton Diced



Lamb Loin

FROZEN LAMB / MUTTON / GOAT PRODUCTS



Goat with Bone
15 Pack X 1 kg



Mutton Diced / Lamb Diced
15 Pack X 1 Kg

Lamb with Bone
15 Pack X 1 Kg



Lamb Feet Cut
15 Pack X 1 Kg



Donner Kebab
10 Kg

FRESH POULTRY PRODUCTS





Chicken whole

Chicken 900gm X 10 Bird's
 Chicken 1000gm X 10 Bird's
 Chicken 1100gm X 10 Bird's
 Chicken 1200gm X 10 Bird's
 Chicken 1300gm X 10 Bird's
 Chicken 1400gm X 8 Bird's
 Chicken 1500gm X 8 Bird's
 Chicken 1600gm X 8 Bird's
 Chicken 1700gm X 8 Bird's
 Chicken 1800gm X 8 Bird's



Chicken Fillet
 4 Kg X 2 Tray



Chicken Leg Quarter
 280/300 Gm X 10 kg box
 350/380 gm x 10 kg box
 300/320 gm X10 Kg Box



Chicken Gizzard
 1 Kg



Chicken Heart
 1 Kg



Chicken Liver
 1 Kg



Chicken Wings
 (3 joint) 10 Kg

FROZEN POULTRY PRODUCTS





Chicken House Cut
HMC



Chicken Leg Quarter
HMC



Chicken Fillet
HMC



Thai Chicken Fillet



Poussin
500 - 600 Gm IQF X 10 Pcs



pigeon
350 - 400 Gm X 12 Pcs



Quails Skinless 100 GM
20 Tray X 4 Birds



Duck (Whole)
W/O Neck & Giblet



Duck 2100gm IQF X 6 Birds
Duck 2200gm IQF X 6 Birds
Duck 2300gm IQF X 6 Birds
Duck 2400gm IQF X 6 Birds
Duck 2600gm IQF X 6 Birds

Hen Frozen



Hen Whole

Hen 1000GM X 10 Whole Bird
 Hen 1000GM X 10 Whole Bird
 Hen 1000GM X 10 Whole Bird
 Hen 1000GM X 10 Whole Bird
 Hen 1000GM X 10 Whole Bird
 Hen 1000GM X 10 Whole Bird
 Hen 1000GM X 10 Whole Bird



Hen Mama's Leg
 5 Pack X 2 Kg



Hen Wings
 2 Pack X 2.5 Kg (5 Kg Box)



Hen Mama's Cut
 15 Pack X 1 Kg

BLOCK FISH PRODUCTS



Ayer (C)	KG(500GM X 16)PER MC
Bacha (W)	KG(500GM X 16)PER MC
Bailla (C)	KG(500GM X 16)PER MC
Batashi(C)	KG(250GM X 30)PER MC
Bata (C)	KG(500GM X 16)PER MC
Baspata (C)	KG(250GM X 30)PER MC
Bozori (C)	KG(250GM X 30)PER MC
Boal Clean	KG(500GM X 16)PER MC
Chalapata (W)	KG(250GM X 30)PER MC
Chapila (C)	KG(250GM X 30)PER MC
D/Puti (C)	KG(250GM X 30)PER MC
D/Koral (C)	KG(500GM X 16)PER MC
Foly (C)	KG(500GM X 16)PER MC
Gutum/ Butum (C)	KG(250GM X 30)PER MC
Gulsha (500) (C)	KG(500GM X 16)PER MC
Horina (C) H/L Slate	KG(200GM X 30)PER MC
Hilsha (C)	KG(500GM X 16)PER MC
Hilsha Egg (C)	KG(200GM X 30)PER MC
Kaika (C)	KG(500GM X 16)PER MC
Keski (W)	KG(250GM X 30)PER MC
Keski (W)	KG(250GM X 24)PER MC
Koi (C)	KG(500GM X 16)PER MC
Loita (C)	KG(500GM X 16)PER MC
Long Baim (C)	KG(500GM X 16)PER MC
Lasso (C)	KG(500GM X 16)PER MC
Magur (C)	KG(500GM X 16)PER MC
Mix Fish (C)	KG(250GM X 30)PER MC
Moilla (C)	KG(250GM X 30)PER MC
Pabda (W)	KG(500GM X 16)PER MC
Pabda (W)	KG(500GM X 12)PER MC
Poa (C)	KG(500GM X 16)PER MC
Sarputi (C)	KG(500GM X 16)PER MC
Star Baim ©	KG(500GM X 16)PER MC
Shing (C)	KG(500GM X 16)PER MC
Shoil (C)	KG(500GM X 16)PER MC
Tengra (W)	KG(500GM X 16)PER MC
Taki (C)	KG(500GM X 16)PER MC
Telapia (C)	KG(500GM X 16)PER MC
Taposhi (C)	KG(500GM X 16)PER MC
Rohu Egg	KG(250GM X 30)PER MC
Rohu (C)	KG(500GM X 16)PER MC
Khoulsha (C)	KG(250GM X 30)PER MC

WHOLE FISH PRODUCTS





RUHU (G)

**2 KG UP
3 KG UP
4 KG UP
5 KG UP**



KATLA (Gutted)

**4 KG UP
5 KG UP
6 KG UP
7 KG UP**



MRIGAL (G)

**3 KG
4 KG**



BOAL (W)

6 - 10 KG UP



HILSHA

**HILSHA (W) 700 / 800 G
HILSHA (W) 800 / 1000 G
HILSHA (W) BD 800/ / 1000 G**



KORAL (W)

**3 KG UP
4 KG UP**



SHOIL (W)

1 KG UP



PANGASH (G)

2 KG UP



WHITE POMFRET (W)

100/ 200 GM



AYER (W)

**1.5 KG
2 KG**



S / PUTI (W)

**800 / 1000 GM
1 KG
1.5 KG**



CARFU (Gutted)

FROZEN VEGETABLES / LEAVES



Matembele/Sweet Potato
Leaves
20 Pack X 500gm



Ngai-Ngai/Sorrel/Busa
20 Pack X 500gm



Biteku-tekku / Sweet
Amaranth
25 Pack X 500gm



Pongu Skaka
50 Pack X 500gm



Bitter Leaves
50 Pack X 500gm



Beans Split

FROZEN FOOD PRODUCTS





Monsalwa Plain Paratha
5 Pcs X 24 Pkt



Monsalwa Plain Paratha
Family Pack
20 Pcs X 6 Pkt



Monsalwa Wheat Paratha
Family Pack
20 Pcs X 6 Pkt



Monsalwa Lacha Paratha
5 Pcs X 24 Pkt



Monsalwa Aloo Paratha
4 Pcs X 18 Pkt



Monsalwa Puri
4 Pcs X 18 Pkt



Monsalwa Wheat Chapati
18 Pcs X 8 Pkt



Monsalwa Aloo Samosa
50 Gm
12 Pcs X 10 Pkt



Monsalwa Aloo Samosa
90 Gm
12 Pcs X 10 Pkt



Monsalwa Chatpata
Samosa 90 Gm
12 Pcs X 10 Pkt



Ramzan Lamb
Sheesh Kebab
16 Pack X 18pcs



Ramzan Chicken
Sheesh Kebab
16 Pack X 18pcs



Ramzan Vegetable
Samosa 20pcs
15 Pack X 20pcs



Ramzan Vegetable
Samosa 50pcs
06 Pack X 50 pcs



Ramzan Lamb
Samosa 20pcs
15 Pack X 20pcs



Ramzan Lamb
Samosa 50pcs
06 Pack X 50pcs



Ramzan Chicken
Samosa 20pcs
15 Pack X 20 pcs



Ramzan Chicken
Samosa 50pcs
06 Pack X 50 pcs



Ramzan Lamb
Chappel Kebab
16 Pack X 08 pcs



Ramzan Chicken Chappel
Kebab
16 Pack X 08 pcs



Chicken Nuggets
07 Pack X 800 gm



Chicken Gujoun
06 Pack X 800 gm



Asba Meats Ltd



CONTACT

ADDRESS

**UNIT 2 BEECH PARK, LOGISTIC CENTRE, SMITHSTOWN
INDUSTRIAL ESTATE**

**SALES@ASBAMEATS.COM
INFO@ASBAMEATS.COM**

**+353 69 76333
+353 87 342 75 92**

WWW.ASBAMEATS.COM